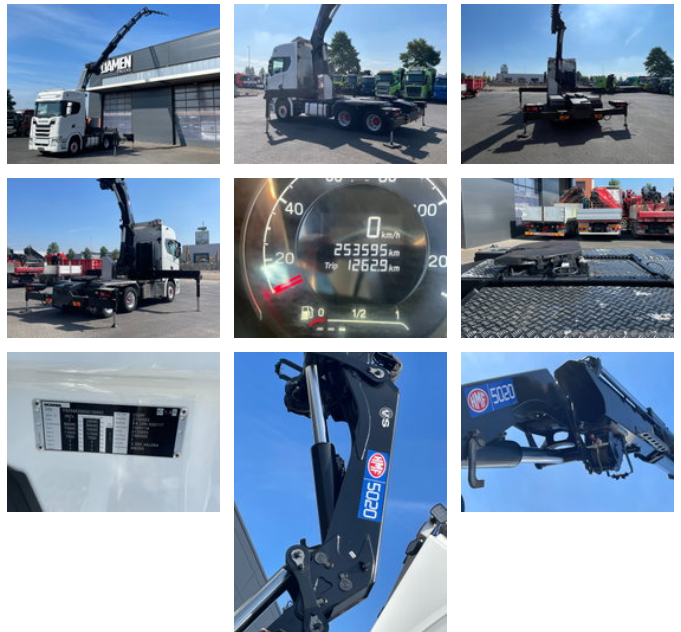




Scania S580 S580 NGS 6x2 HMF 5020-K6 + JIB FJ 1000-K5

General characteristics

Brand	Scania
Model	S580
Subcategory	Crane truck
Meter reading	253.000km
Year of construction	2017
Date of first registration	11-11-2017
Hours displayed	2500
Condition	Used
General state	Good
Fuel	Diesel
Emission class	Euro 6
Reference	DT-130653
CE marking	And



Properties

Single weight	16.953kg
Load capacity	9.050kg
GVW	26.000kg

Scania S580 S580 NGS 6x2 HMF 5020-K6 + JIB FJ 1000-K5

Technical specifications

Number of axes	3
Axis configuration	6x2
Transmission	Automatic
Assets	427kw

Accessories

- Onboard Computer
- Cabin
- Central doorlocking
- Climate control
- EBS
- Electric windows
- ESP
- Closed cabin
- Hill Assist
- Leather interior
- Light (metallic) rims
- Passenger seat
- Radio/Cd/Audio system
- PTO
- Visor
- Cruise control
- Electrically operated windows
- Radio/CD player
- Refrigerator
- Sleeper cab
- Central locking
- Electrically adjustable door mirrors
- Low-noise
- Toolbox
-
- Intarder
- Roof spoiler